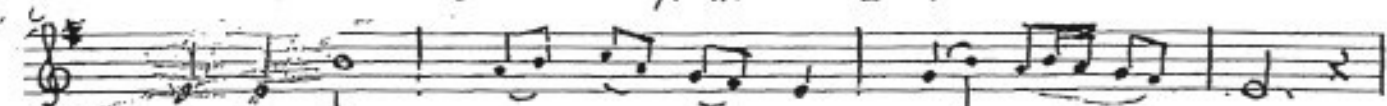


YA'ALEH

ALAN MICHELSON
PHILIP MORROW



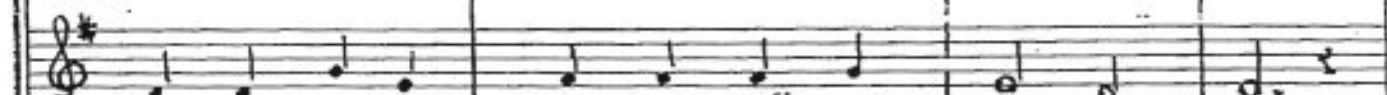
YA-A-LEH. YA-A-LEH TA-CHA-NU-NĒ-NU MĒ-E — REV
YISH. — Ē-NU



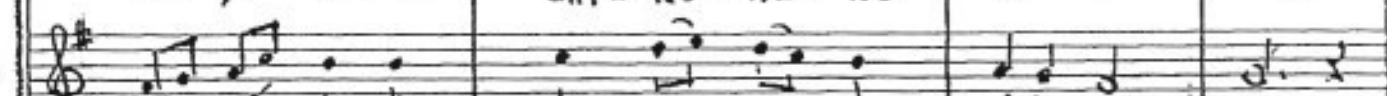
VE-YĀ-VO SHAV-A-TĒ-NU MI-BO — KER
TĀ-HA-RĒ-NU



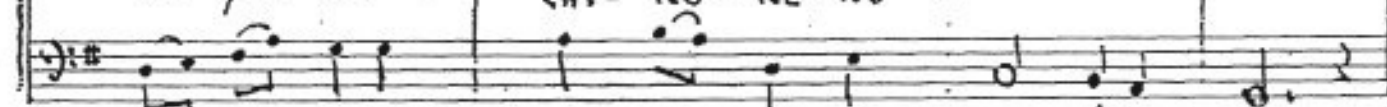
VE-YĒ-RA-EH RI-NU-NĒ-NU AD A-REV,
CHI-NU-NĒ-NU



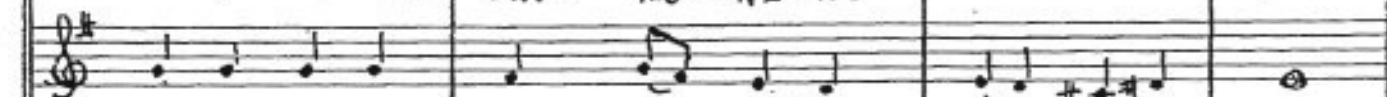
VE-YĒ-RA-EH RI-NU-NĒ-NU AD A-REV,
CHI-NU-NĒ-NU



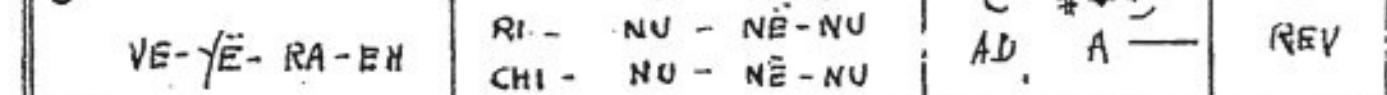
VE-YĒ-RA-EH RI-NU-NĒ-NU AD A-REV
CHI-NU-NĒ-NU



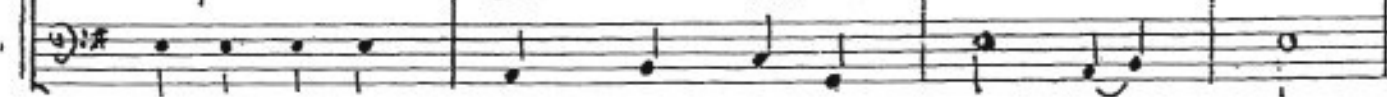
VE-YĒ-RA-EH RI-NU-NĒ-NU AD A-REV
CHI-NU-NĒ-NU



VE-YĒ-RA-EH RI-NU-NĒ-NU AD A-REV
CHI-NU-NĒ-NU



VE-YĒ-RA-EH RI-NU-NĒ-NU AD-A-REV
CHI-NU-NĒ-NU



YA - A - LEH KO LE - NU ME - E - REV
 ZICH - RO - NE - NU

VE - YA - VO TZID - KA - TE - NU MI - BO - KER
 VEE - OO - DE - NU

VE - YE - RA - EH PID - YO - NE - NU AD A - REV
 HAD - RA - TE - NU

VE - YE - RA - EH PID - YO - NE - NU AD A - REV
 HAD - RA - TE - NU

VE - YE - RA - EH PID - YO - NE - NU AD A - REV
 HAD - RA - TE - NU

B

VE - YE - RA - EH PID - YO - NE - NU AD A - REV
 HAD - RA - TE - NU

VE - YE - RA - EH PID - YO - NE - NU AD A - REV
 HAD - RA - TE - NU

VE - YE - RA - EH PID - YO - NE - NU AD A - REV
 HAD - RA - TE - NU

Alto

YA - A - LEH EE - NU - YE - NU ME - E REV

Ten

DOF KE - NU

V YA - VO SHI - LHA - TE - NU MI BO - KER. KER.

GI - LE - NU MI - BO -

IE - YE - RA - EH NA - A - KA - TE - NU AD A - REV.

BA - KA - JHA - TE - NU

VE - YE - KA - EH NA - A - KA - TE - NU AD A - REV.

BA - KA - JHA - TE - NU

VE - YE - RA - EH NA - A - KA - TE - NU AD A - REV.

BA - KA - JHA - TE - NU

VE - YE - RA - EH NA - A - KA - TE - NU AD A - REV.

BA - KA - JHA - TE - NU

ADULTS

MĒ — E — REV

YA-A-LEH ME-NU SE NU MĒ — E — REV
 EN-KA TĒ NU

MI BO — KER.

V' YA-VO ŠLI-CHA-TĒ-NU MI — BO — KER
 Ē — LE-CHA

VE-YĒ-RA-EH KI-PU-RĒ-NU AD A — REV
 TĒ — LE-NU

VE-YĒ-RA-EH KI-PU-RĒ-NU AD A — REV.
 Ē — LE-NU

VE-YĒ-RA-EH KI-PU-RĒ-NU AD A — REV.
 Ē — LE-NU

VE-YĒ-RA-EH KI-PU-RĒ-NU AD A — REV.
 Ē — LE-NU